

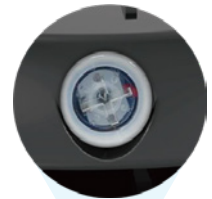
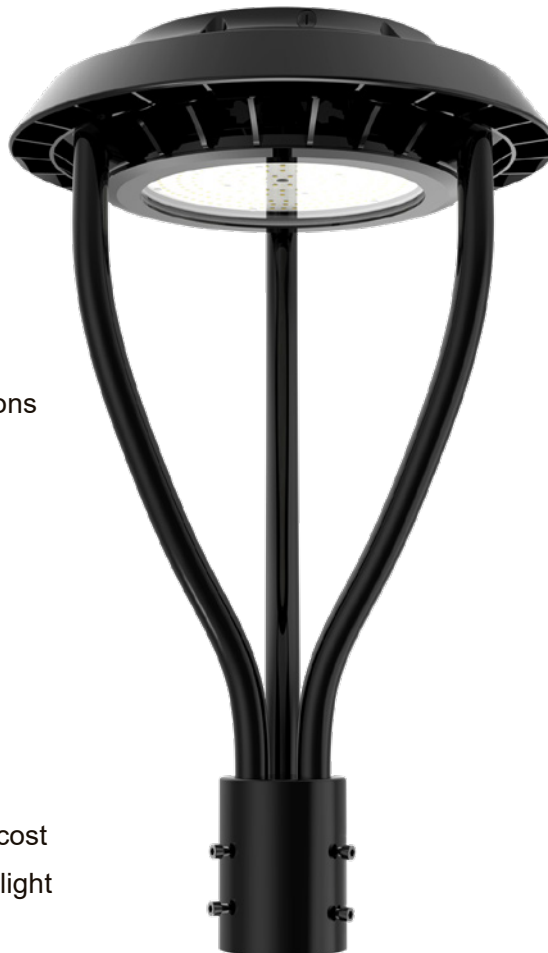
LED POST TOP AREA LIGHT

- HIGH QUALITY LIGHTING
- EASY INSTALLATION
- SAFE AND ENVIRONMENTALLY FRIENDLY
- WATERPROOF AND DURABLE
- SAVING ENERGY



Features

- 60~150W available
- IP65 waterproof dust free
- Energy saving 50% at least
- ETL cETL DLC approved
- 3000K 4000K or 5000K CCT selectable options
- Adjustable wattages: 60%/ 80%/ 100%
- 150LM/W SMD3030 chips
- 5-Years warranty
- Unicersal voltage AC120~277V
- 120 degree beam angle
- High power factor>0.9, low THD driver
- Available with photocell sensor
- Using high quality LED chips
- High intensity and stability, no maintenance cost
- Anti-shok, anti-moisture, no glare, no strobe light
- Protecting your eyes.



Photocell Sensor

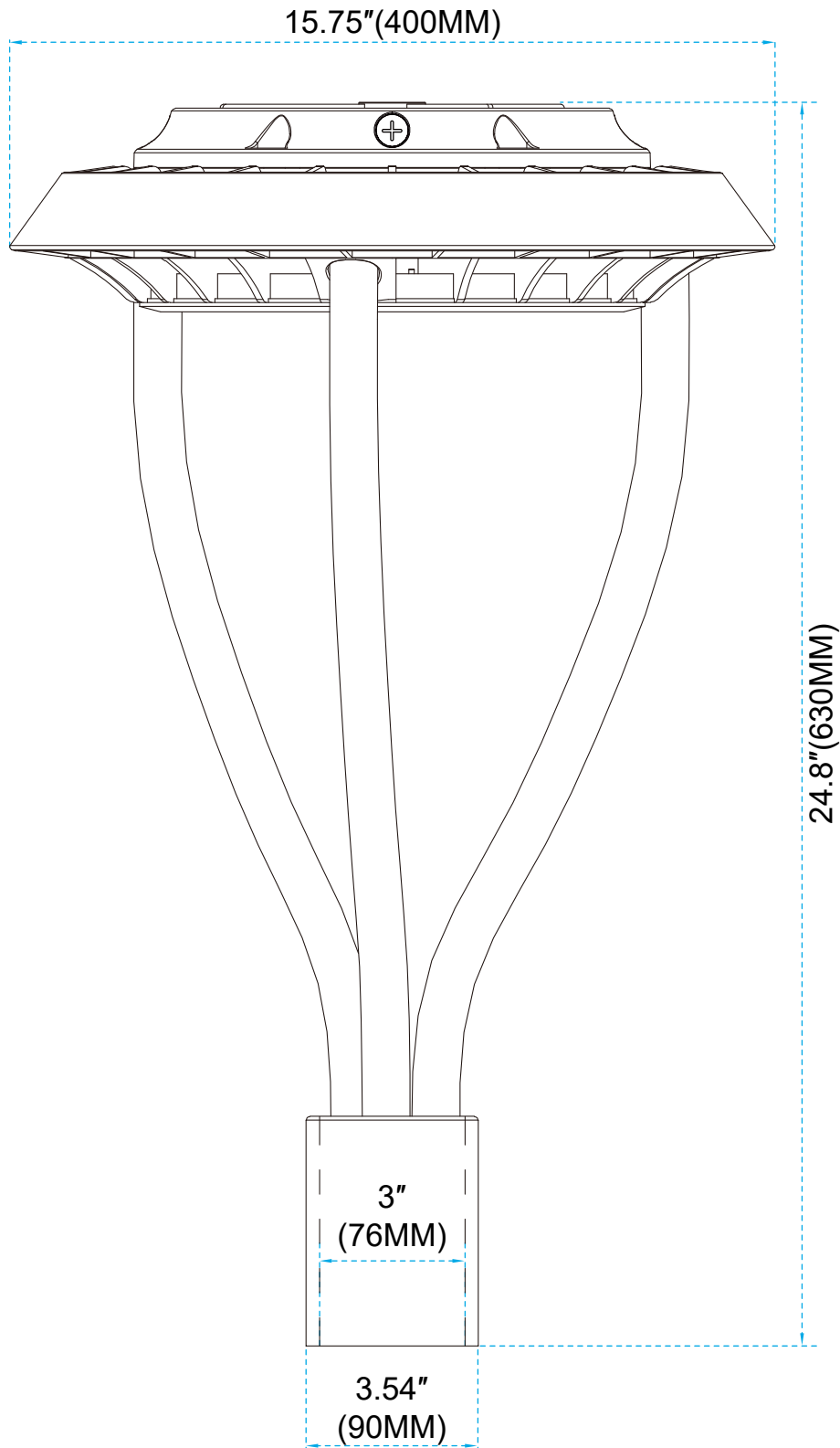


Wattage & CCT selector switch cap

Applications

LED Pst Top Area Lighting series can be tidely used in city expressway, trunk road, factories, schools, garden, parking lots, pubic parks etc.

Series	Lumens	Base	Beam Angle (Degree)	Electrical Data	LED Type	Color temperature	Color rendering index
NG-PTA-60W	9000 Lm	3 pin wires	120 degree	Input Voltage 120-277V 50~60Hz Total Power(W) 60W 80W 100W 150W Power Factor(%) >90	SMD 3030 chips	WW 3000 K NW 4000 K DW 5000 K CW 5700 K	70 70 CRI 80 80 CRI 90 80 CRI
NG-PTA-80W	12000 Lm						
NG-PTA-100W	15000 Lm						
NG-PTA-150W	22500 Lm						



Installation Instructions

Warning: Do not cut off electrical source in order to avoid electrical shock and endanger life-safety before installation.

Model	Power	Input Voltage
NG-PTA-60W	60W	120~277V 50/60Hz
NG-PTA-80W	80W	120~277V 50/60Hz
NG-PTA-100W	100W	120~277V 50/60Hz
NG-PTA-150W	150W	120~277V 50/60Hz

Step 1: Pass the leads of the lights through the stem, then fix the stem with the lamp.

Step 2: Pass the leads of the light through the tenon pole, then using screws to fix it.

Step 3: Electrical connections

connect the black wire to line

connect the white wire to neutral

connect the green or green/yellow wire to ground

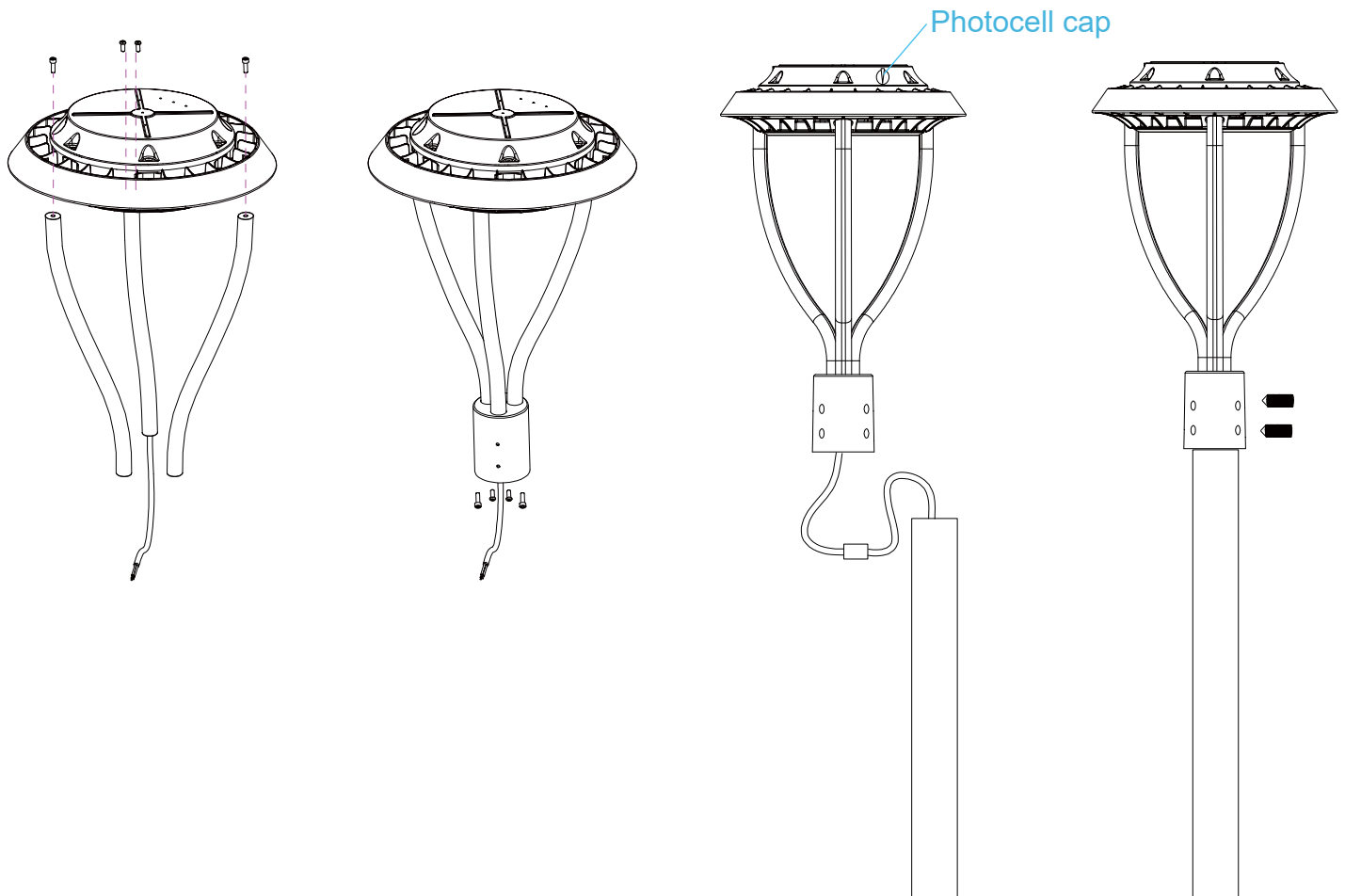
And good waterproof processing.

LINE	—●—	BLK
NEU	—●—	WHI
GRND	—●—	REN, GRN/YEL

Step 4: Remove the photocell cap if you need a Dusk-to-Dawn function.

Step 5: On the lamps and lanterns hung up safety rope, and then install the lamp on the mast

※ Install height from floor higher than 1.2m.



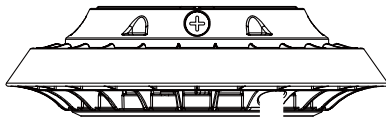
How to adjust the temperature of the light

Warm Notice

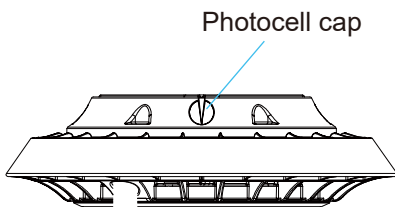
- 1: Please turn off the light before adjustable power & CCT.
- 2: Only turn on the light after you finished the power & CCT selection.



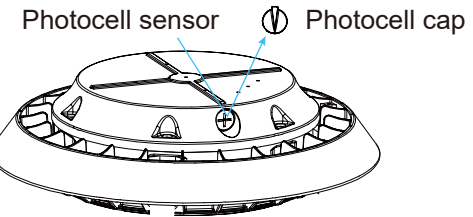
1. Unscrew the cap with a slotted screw



3. Screw the cap after CCT selection



2. Select the proper color temperature as you need



CCT Selections:

There are 3 color temperatures available (CW/NW/WW)
 Please select the color temperature you prefer before installation

WW	NW	CW
3000K	4000K	5000K

Power Selections:

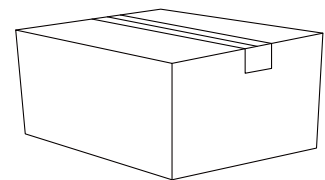
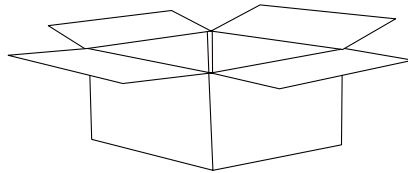
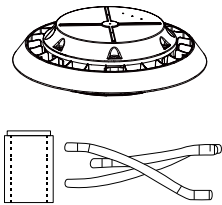
There are 3 power options (L/M/H), please select the power according to your needs

PTA-60W	L(60%)	M(80%)	H(100%)
	36W	48W	60W

PTA-80W	L(60%)	M(80%)	H(100%)
	48W	64W	80W

PTA-100W	L(60%)	M(80%)	H(100%)
	60W	80W	100W

PTA-150W	L(60%)	M(80%)	H(100%)
	90W	120W	150W



POWER	Unit	Size	Gross Weiget	Volume
60W 80W	1PCS	512*490*150mm	6.95 Kg	0.038m ³
	2PCS	532*510*340mm	15.1 Kg	0.093m ³
100W	1PCS	512*490*150mm	7.2 Kg	0.038m ³
	2PCS	532*510*340mm	15.6 Kg	0.093m ³
150W	1PCS	512*490*150mm	7.45 Kg	0.038m ³
	2PCS	532*510*340mm	16.2 Kg	0.093m ³