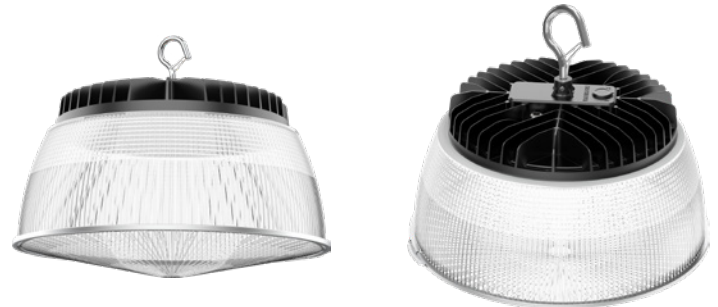
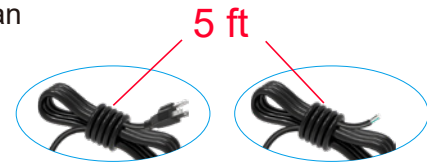


## KEY FEATURES

- \* Unique and exquisite appearance design
- \* Aluminum shell, great heat dissipation performance, longer life span
- \* Build-in driver, better price
- \* Thinner and lighter design, lower shipping cost
- \* 150LM/W SMD3030 Chips
- \* Adjustable wattages: 100W/ 150W/ 200W/ 240W
- \* Adjustable CCT: 4500K/ 5000K/ 5700K
- \* Voltage rating: 100-277VAC/ 120-347VAC
- \* 5-Year warranty



CCT Adjustable	Power Adjustable
4500K 5000K 5700K	60% 80% 100%

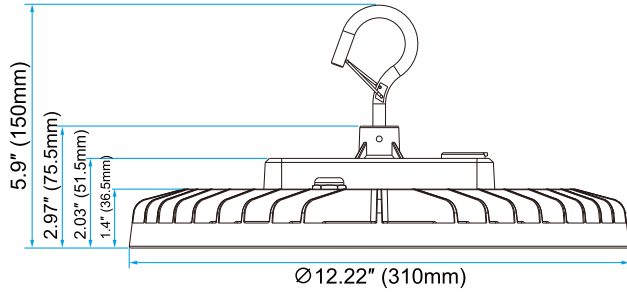
## APPLICATIONS

LED UFO LIGHT series can be widely used in warehouse, Grocery, Garage, shopping mall etc.



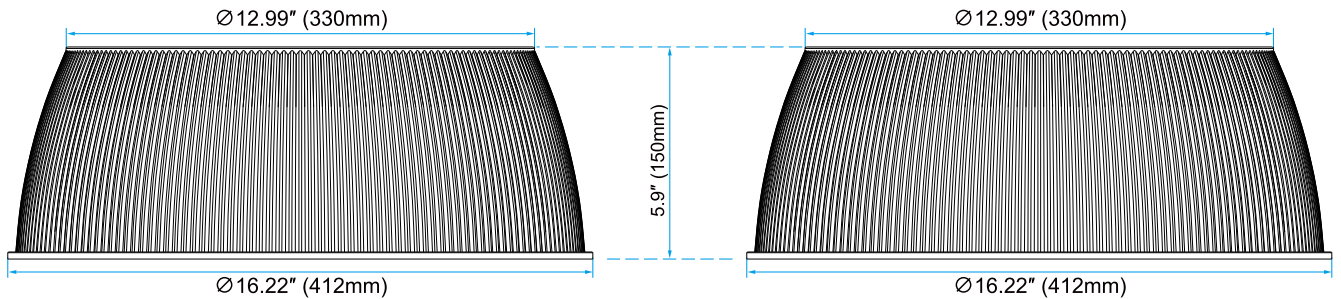
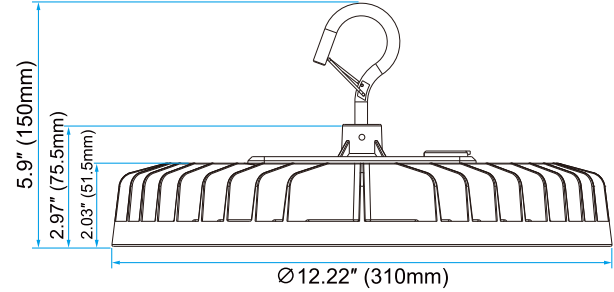
100W/ 150W

Weight:3000g/ 6.61 lbs



200W/ 240W

Weight:3500g/ 7.72 lbs



Model	CCT	Lumen (±10%lm)	Efficacy (±10%)	Beam Angle	LED/ Qty.	Power (±10%)	Voltage/ Frequency	Protection Grade	CRI	PF	Dimming
NG-BIUFO-100W	4500K	15000	150LM/W	120°	SMD3030 - 180pcs	100W	100-277VAC 120-347VAC 50/60Hz	IP65	≥80	>0.9	0-10V
NG-BIUFO-150W		22500				150W					
NG-BIUFO-200W	5000K	30000			SMD3030 - 260pcs	200W					
NG-BIUFO-240W	5700K	36000				240W					

\*The number of LED Chips in the adjustable CCT version is doubled.

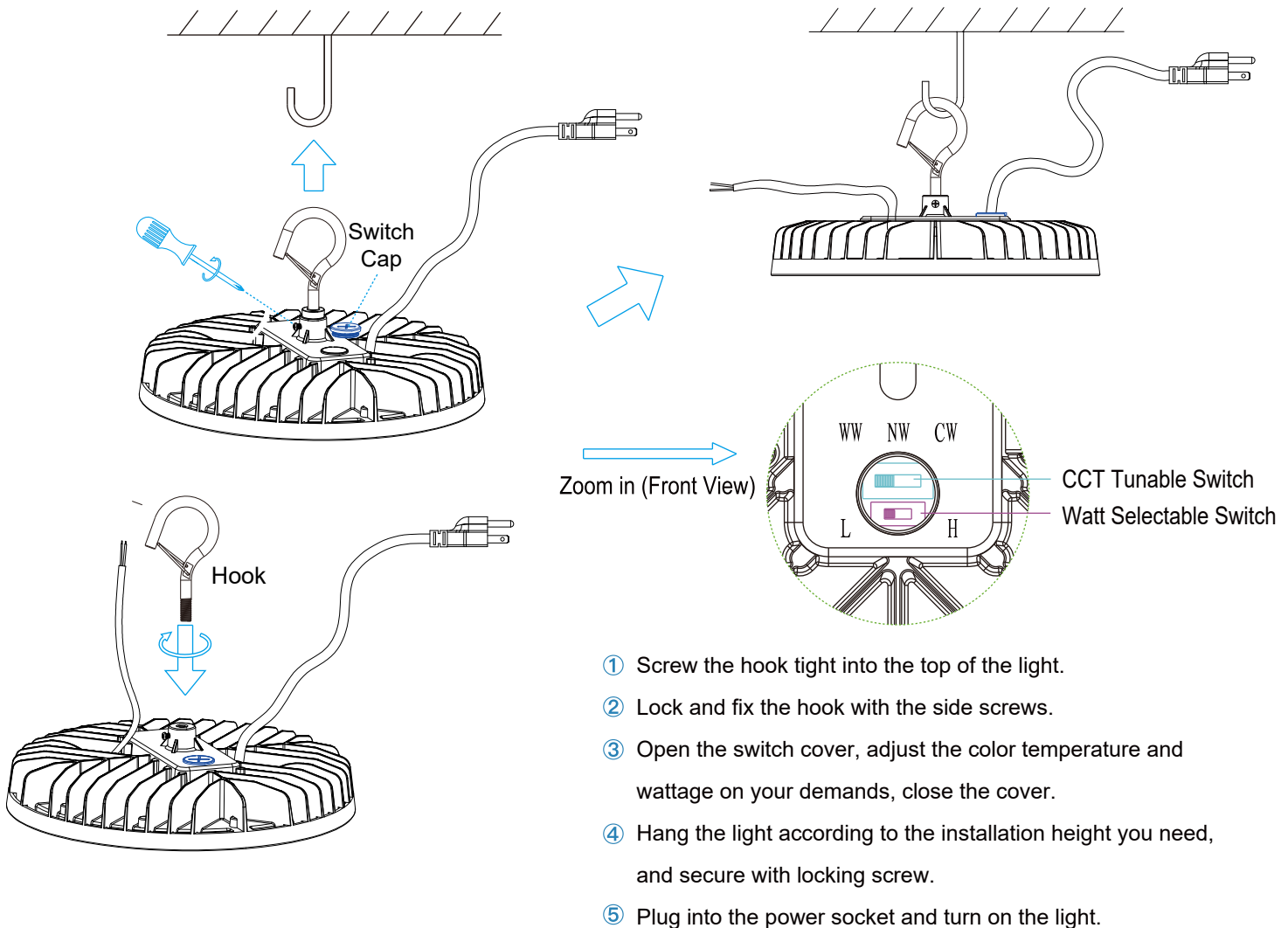
**\* IMPORTANT**

**READ CAREFULLY BEFORE INSTALLING FIXTURE. RETAIN THESE INSTRUCTIONS FOR FUTURE REFERENCE.**

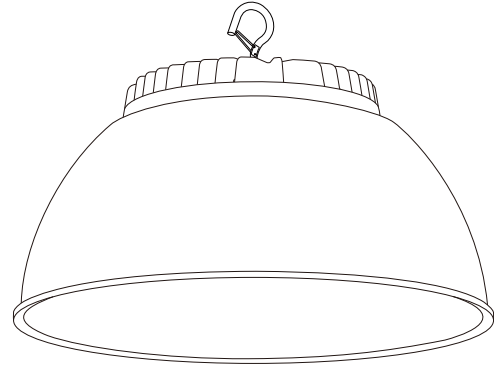
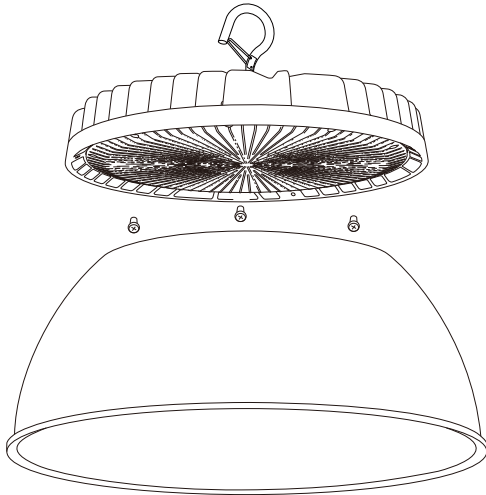
NGTLIGHT fixtures must be wired by qualified electrician. Proper grounding is required for safety.

Make sure power is OFF before installing or maintaining fixture.

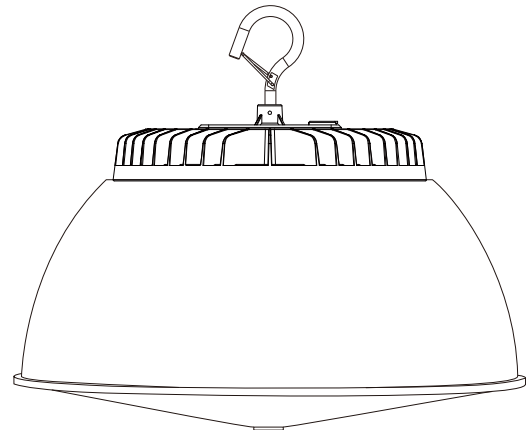
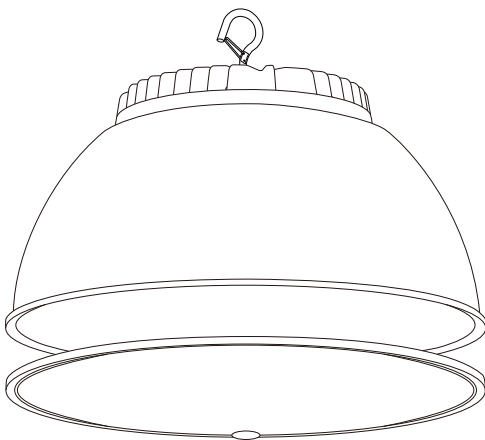
**CAUTION:** Be sure fixture temperature is cool enough to touch. Do not clean or maintain while fixture is energized.



1. Lock the PC reflector to the fixture with screws



2. installation completed.



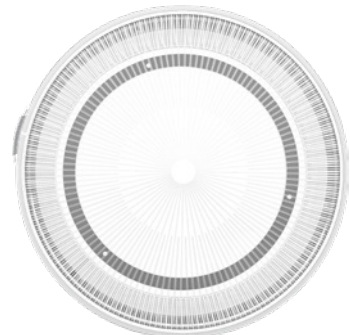


**White**

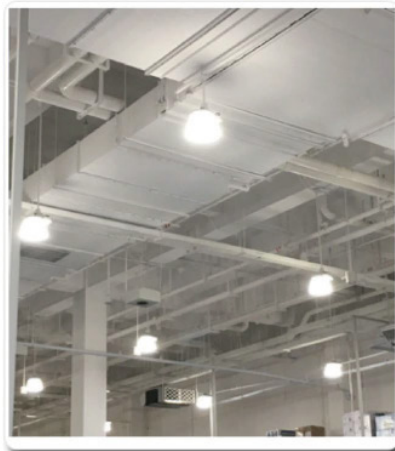


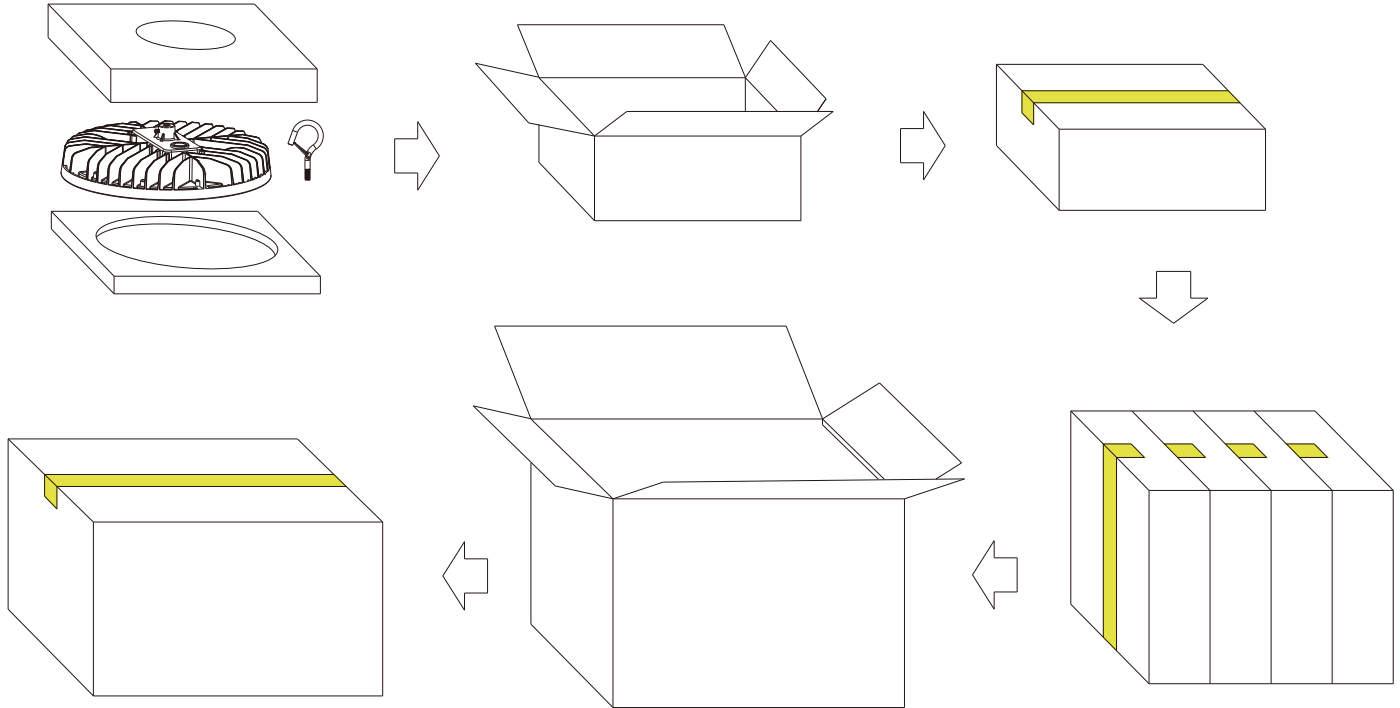
**Black**

**Reflector**



LED UFO Light can be widely used in supermarket, warehouse, garage, factory, workshops, highway toll station, gas station, exhibition hall, commercial and industrial lighting etc.





Power	Unit	Size	Gross Weight	Volume
NG-BIUFO-100W	1 PC	320x320x125mm/ 12.60**12.60**4.92"	3.0 KG/ 6.61 lbs	0.013m <sup>3</sup>
NG-BIUFO-150W	4 PCS	555x335x340mm/ 21.85**13.19**13.39"	13 KG/ 28.66 lbs	0.063m <sup>3</sup>
NG-BIUFO-200W	1 PC	320x320x125mm/ 12.60**12.60**4.92"	3.5 KG/ 7.72 lbs	0.013m <sup>3</sup>
NG-BIUFO-240W	4 PCS	555x335x340mm/ 21.85**13.19**13.39"	15 KG/ 33.07 lbs	0.063m <sup>3</sup>
Reflector	5 PCS	420x420x355mm/ 16.54**16.54**13.98"	6 KG/ 13.23 lbs	0.063m <sup>3</sup>